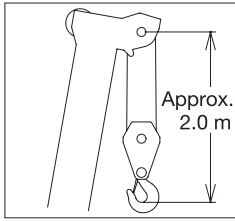
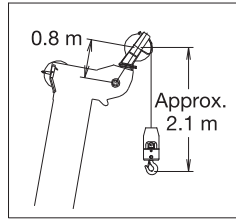


GT-600EL WORKING RANGE CHART

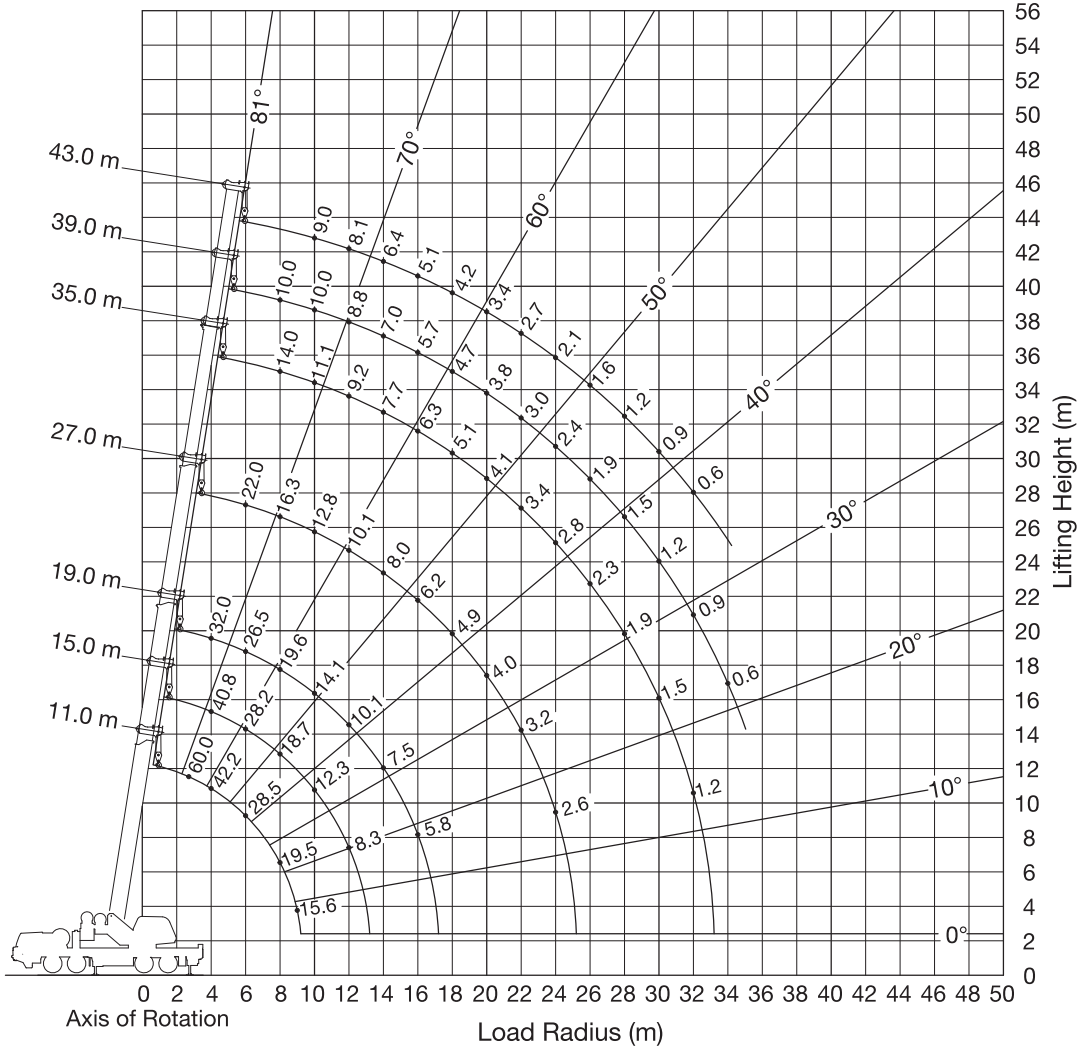
BOOM



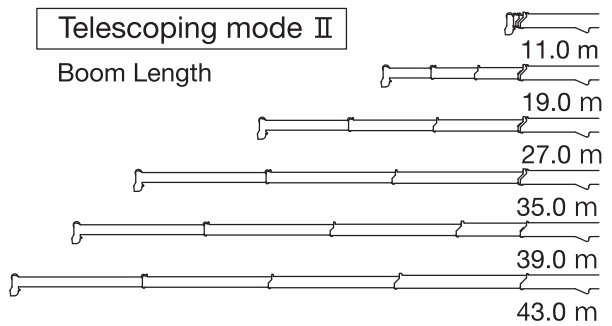
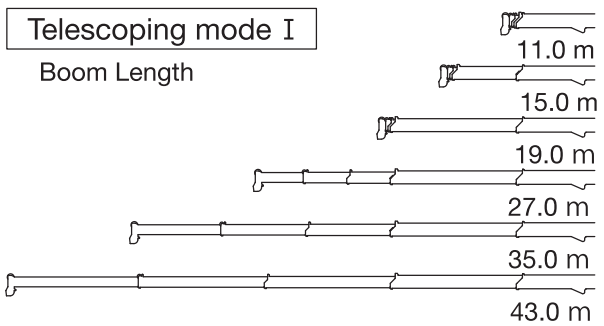
SINGLE TOP



360° ROTATION

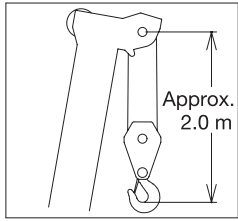


NOTE: Lifting height shows a calculated value.
When boom length is same as telescoping mode I and II it shows large load.

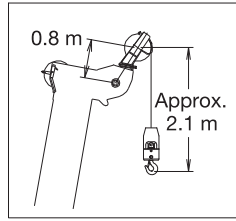


GT-600EL WORKING RANGE CHART

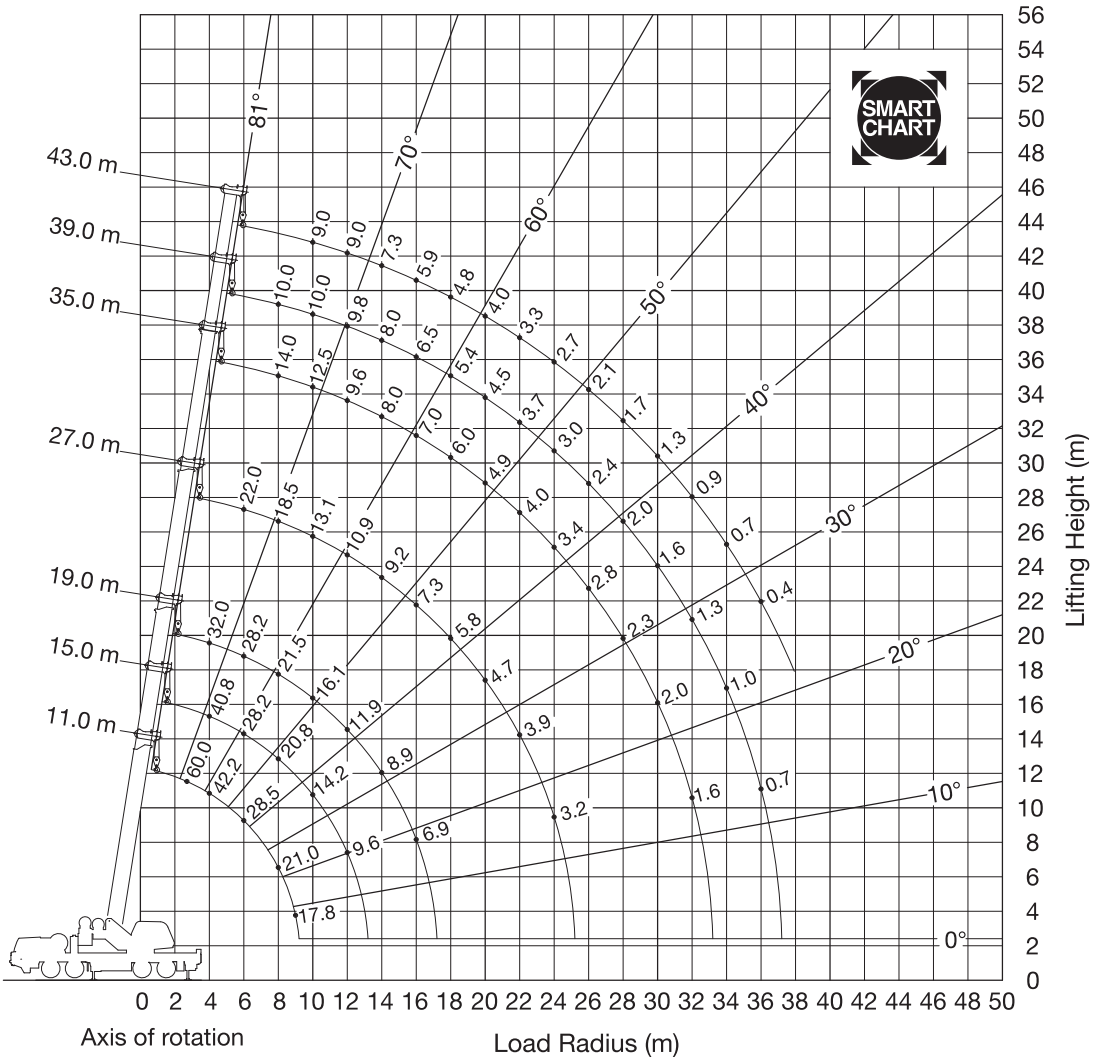
BOOM



SINGLE TOP



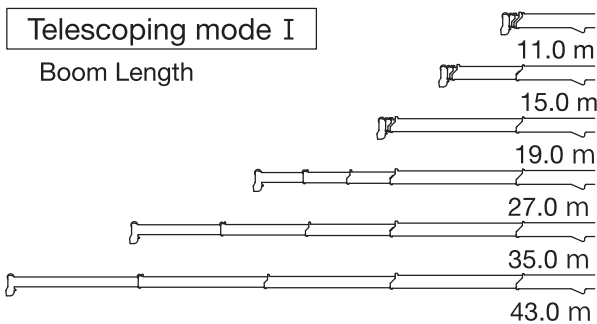
SMART CHART



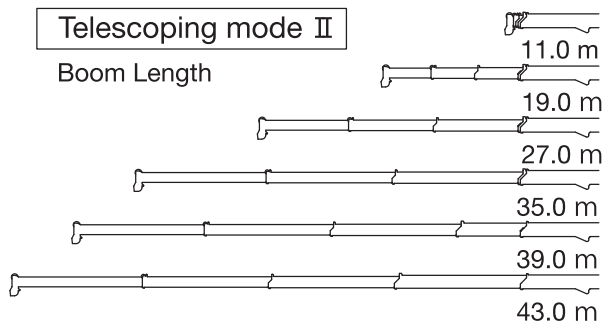
NOTE: Lifting height shows a calculated value.

When boom length is same as telescoping mode I and II it shows large load.

Telescoping mode I
Boom Length

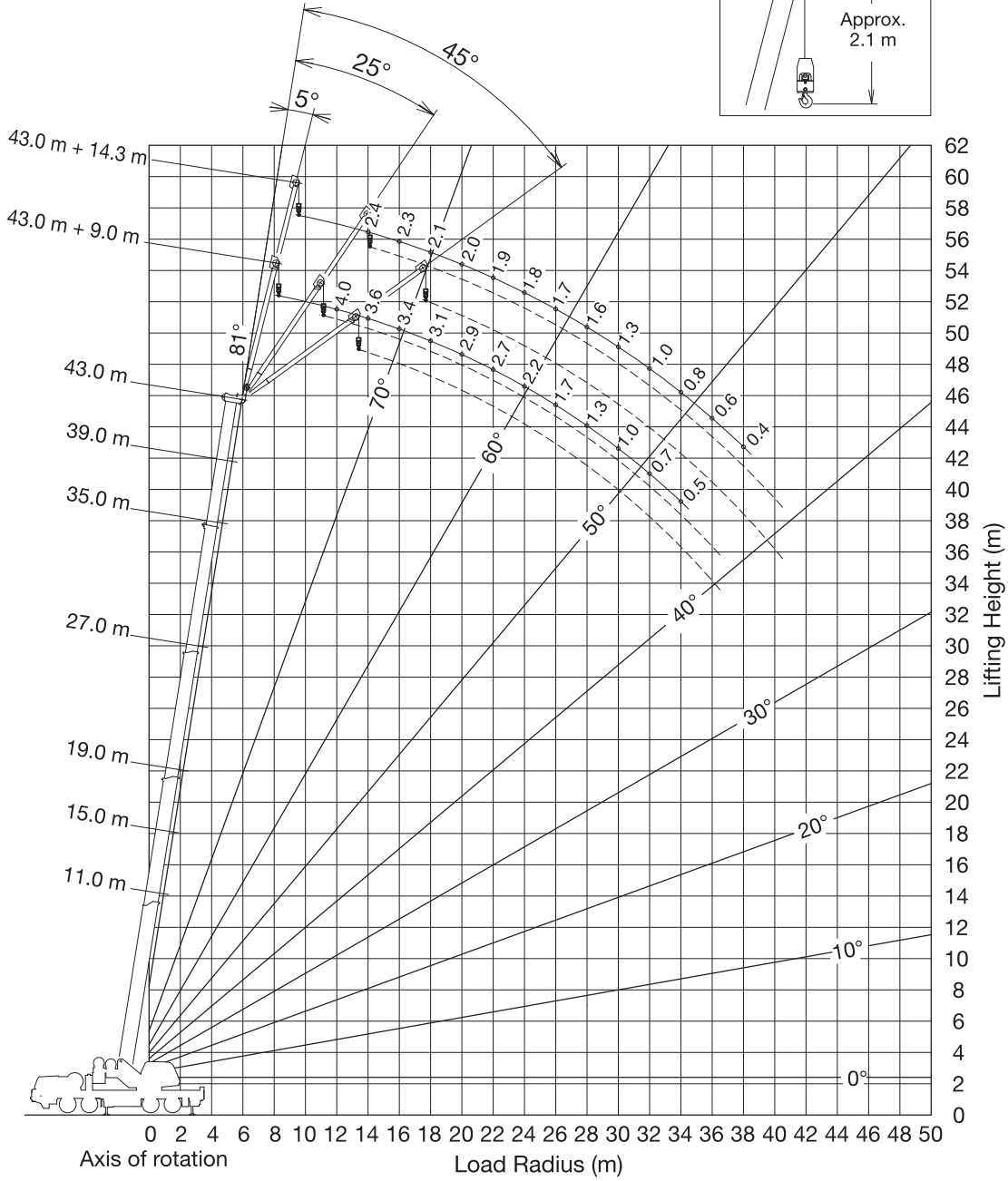
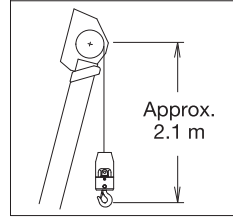


Telescoping mode II
Boom Length

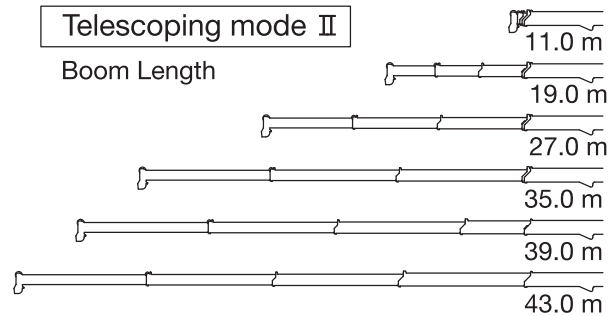
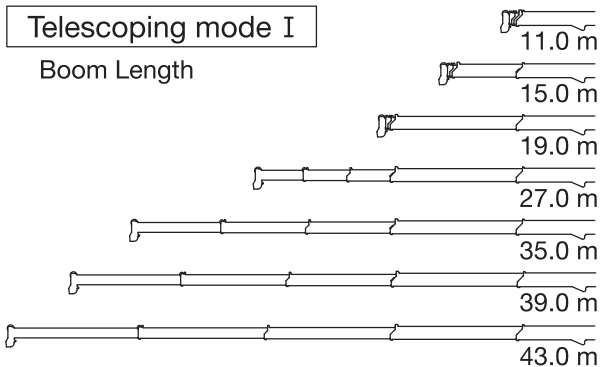


GT-600EL WORKING RANGE CHART

JIB



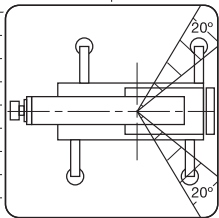
NOTE: Lifting height shows a calculated value.
When boom length is same as telescoping mode I and II it shows large load.



GT-600EL RATED LIFTING CAPACITIES

ON OUTRIGGERS FULLY EXTENDED 7.0 m SPREAD 360° ROTATION (Unit: x 1,000 kg)											
B \ A	11.0	15.0	19.0		27.0		35.0		39.0	43.0	
2.7	*60.0	40.8									
3	*55.0	40.8	32.0	22.0							
3.5	*47.3	40.8	32.0	22.0							
4	42.2	40.8	32.0	22.0							
4.5	37.8	37.6	32.0	22.0							
5	34.2	33.9	32.0	22.0	22.0	17.0					
5.5	31.1	30.9	30.3	22.0	22.0	17.0					
6	28.5	28.2	26.5	22.0	22.0	17.0					
6.5	26.2	25.9	23.5	22.0	21.7	16.8					
7	24.3	23.0	20.9	22.0	19.6	16.2	14.0	12.0			
7.5	22.1	20.7	18.8	21.4	17.9	15.7	14.0	12.0			
8	19.5	18.7	17.0	19.6	16.3	15.2	14.0	11.9	10.0		
9	15.6	15.1	13.9	16.5	13.6	14.0	12.9	11.2	10.0	9.0	
10		12.3	11.6	14.1	11.5	12.8	11.1	10.7	10.0	9.0	
11		10.0	9.7	11.9	9.9	11.5	9.6	10.0	10.0	9.0	
12		8.3	8.0	10.1	8.5	10.1	8.4	9.2	8.8	8.1	
14			5.5	7.5	6.5	8.0	6.6	7.7	7.0	6.4	
16			3.9	5.8	4.8	6.2	5.2	6.3	5.7	5.1	
18					3.6	4.9	4.1	5.1	4.7	4.2	
20					2.7	4.0	3.2	4.1	3.8	3.4	
22					2.0	3.2	2.4	3.4	3.0	2.7	
24					1.4	2.6	1.9	2.8	2.4	2.1	
26							1.4	2.3	1.9	1.6	
28							1.0	1.9	1.5	1.2	
30							0.6	1.5	1.2	0.9	
32								1.2	0.9	0.6	
34									0.6		
Telescoping Mode	I, II	I	I	II	I	II	I	II	II	I, II	
Number of parts of line	15	10	8	6	6	4	4	4	4	4	

ON OUTRIGGERS FULLY EXTENDED 7.0 m SPREAD SMART CHART (Unit: x 1,000 kg)											
B \ A	11.0	15.0	19.0		27.0		35.0		39.0	43.0	
2.7	*60.0	40.8	32.0	22.0							
3	*55.0	40.8	32.0	22.0							
3.5	*47.3	40.8	32.0	22.0							
4	42.2	40.8	32.0	22.0							
4.5	37.8	37.6	32.0	22.0	22.0	17.0					
5	34.2	33.9	32.0	22.0	22.0	17.0					
5.5	31.1	30.9	30.7	22.0	22.0	17.0					
6	28.5	28.2	28.1	22.0	22.0	17.0					
6.5	26.2	26.0	25.8	22.0	22.0	16.8	14.0	12.0			
7	24.3	24.0	23.9	22.0	22.0	16.2	14.0	12.0			
7.5	22.6	22.3	22.1	22.0	20.4	15.7	14.0	12.0	10.0		
8	21.0	20.8	19.8	21.5	18.5	15.2	14.0	11.9	10.0		
9	17.8	17.4	16.2	18.9	15.5	14.0	14.0	11.2	10.0	9.0	
10		14.2	13.5	16.1	13.1	12.8	12.5	10.7	10.0	9.0	
11		11.6	11.4	13.9	11.3	11.8	10.9	10.0	10.0	9.0	
12		9.6	9.5	11.9	9.8	10.9	9.6	9.2	9.8	9.0	
14			6.7	8.9	7.6	9.2	7.5	8.0	8.0	7.3	
16			4.8	6.9	5.9	7.3	6.0	7.0	6.5	5.9	
18					4.5	5.8	4.9	6.0	5.4	4.8	
20					3.4	4.7	3.9	4.9	4.5	4.0	
22					2.6	3.9	3.1	4.0	3.7	3.3	
24					2.0	3.2	2.4	3.4	3.0	2.7	
26							1.9	2.8	2.4	2.1	
28							1.4	2.3	2.0	1.7	
30							1.0	2.0	1.6	1.3	
32							0.7	1.6	1.3	0.9	
34									1.0	0.7	
36									0.7	0.4	



* With attachment sheave (When the lifting capacity over 45,000 kg)

A: Boom length (m)
B: Load radius (m)

GT-600EL RATED LIFTING CAPACITIES

ON OUTRIGGERS MID EXTENDED 6.5 m SPREAD 360° ROTATION (Unit: x 1,000 kg)											
B	A	11.0	15.0	19.0		27.0		35.0		39.0	43.0
	2.7		43.6	40.8							
3		40.2	40.1	32.0	22.0						
3.5		35.5	35.3	32.0	22.0						
4		31.6	31.4	31.2	22.0						
4.5		28.3	28.1	28.0	22.0						
5		25.6	25.4	25.2	22.0	22.0	17.0				
5.5		23.2	23.0	22.9	22.0	22.0	17.0				
6		21.2	21.0	20.8	22.0	21.5	17.0				
6.5		19.5	19.2	19.0	20.4	19.5	16.8				
7		17.9	17.7	17.5	18.8	17.5	16.2	14.0	12.0		
7.5		16.6	16.3	16.1	17.5	15.8	15.7	14.0	12.0		
8		15.4	15.1	14.8	16.3	14.3	15.2	13.5	11.9	10.0	
9		13.3	13.0	12.1	14.2	11.9	13.7	11.4	11.2	10.0	9.0
10			10.5	10.1	12.4	10.1	11.8	9.8	10.7	10.0	9.0
11			8.5	8.2	10.3	8.7	10.3	8.5	9.7	8.9	8.2
12			7.0	6.7	8.8	7.5	9.0	7.4	8.6	7.8	7.2
14				4.5	6.5	5.5	6.9	5.7	6.9	6.2	5.6
16				3.1	4.9	4.0	5.4	4.5	5.5	5.0	4.5
18						2.9	4.2	3.4	4.4	4.0	3.5
20						2.1	3.4	2.6	3.5	3.2	2.8
22						1.4	2.7	1.9	2.9	2.5	2.2
24						0.9	2.1	1.4	2.3	1.9	1.6
26								0.9	1.8	1.5	1.2
28								0.6	1.5	1.1	0.8
30									1.2	0.8	0.5
32									0.9	0.5	

ON OUTRIGGERS MID EXTENDED 4.7 m SPREAD 360° ROTATION (Unit: x 1,000 kg)											
B	A	11.0	15.0	19.0		27.0		35.0		39.0	43.0
	2.7		38.8	38.6							
3		35.6	35.4	32.0	22.0						
3.5		31.0	30.8	30.3	22.0						
4		27.3	27.1	24.8	22.0						
4.5		24.3	23.6	20.8	22.0						
5		21.8	20.0	17.7	20.5	16.2	17.0				
5.5		19.7	17.2	15.3	17.9	14.3	16.1				
6		17.1	15.0	13.3	15.9	12.7	14.4				
6.5		14.9	13.1	11.7	14.2	11.3	13.0				
7		12.8	11.6	10.4	12.8	10.2	11.8	9.6	10.8		
7.5		11.1	10.3	9.2	11.6	9.2	10.8	8.8	10.0		
8		9.7	9.2	8.2	10.5	8.3	9.9	8.0	9.2	8.3	
9		7.6	7.2	6.6	8.8	6.9	8.4	6.7	7.9	7.1	6.4
10			5.6	5.3	7.3	5.7	7.2	5.7	6.8	6.1	5.5
11			4.4	4.2	6.1	4.8	6.2	4.8	5.9	5.3	4.7
12			3.5	3.2	5.1	4.0	5.4	4.1	5.2	4.6	4.1
14				1.8	3.6	2.8	4.1	3.0	4.1	3.5	3.0
16				0.8	2.6	1.7	3.0	2.1	3.2	2.7	2.2
18						1.0	2.2	1.5	2.4	2.0	1.5
20							1.6	0.9	1.8	1.4	1.0
22							1.2		1.3	1.0	0.6
24							0.8		0.9	0.6	
26									0.6		

A: Boom length (m)
B: Load radius (m)

Boom length (m)	11.0	15.0	19.0		27.0		35.0		39.0	43.0
Telescoping Mode	I, II	I	I	II	I	II	I	II	II	I, II
Number of parts of line	15	10	8	6	6	4	4	4	4	4